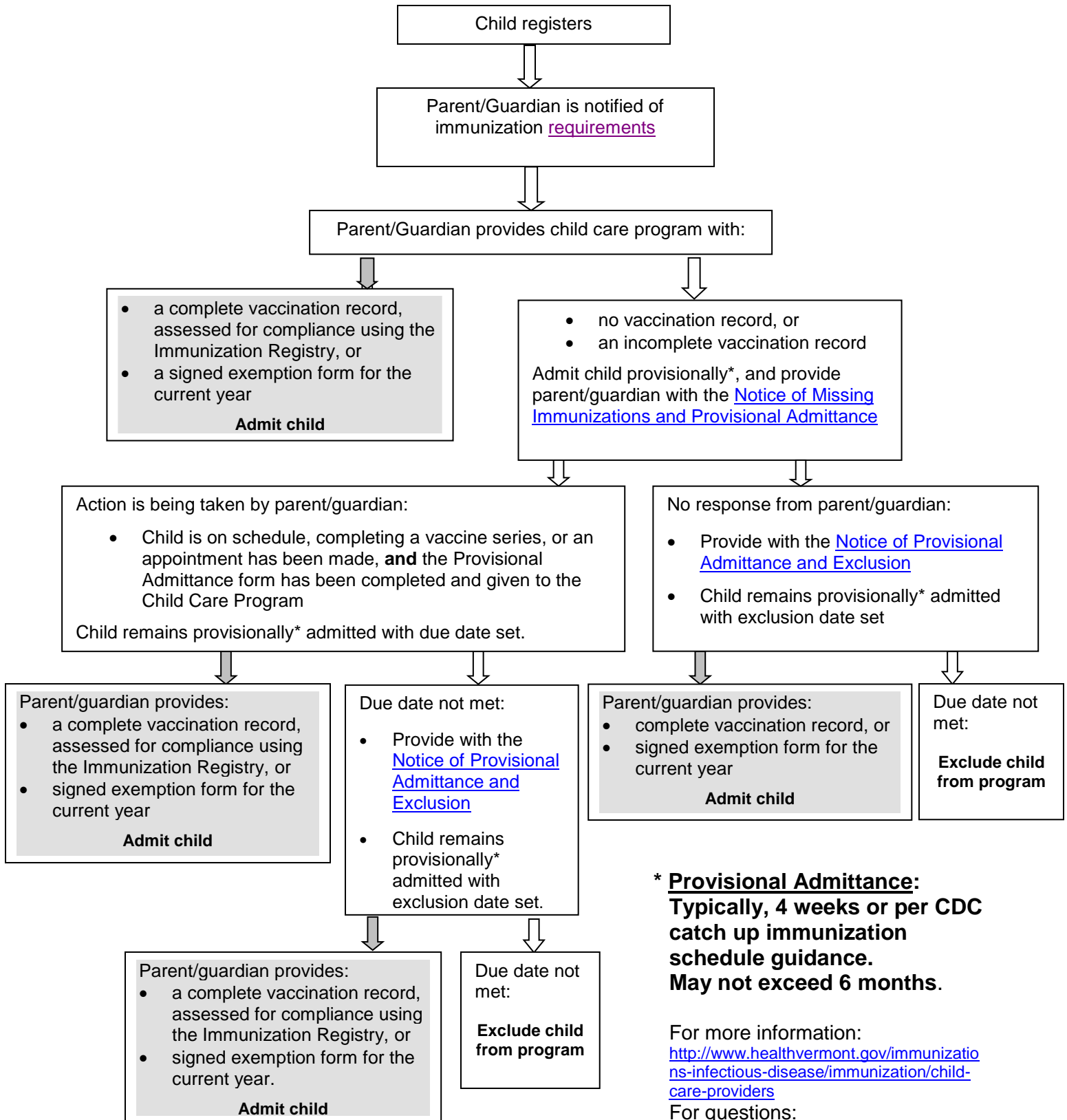


Flow Chart for Child Care Programs: Meeting Vermont's Immunization Rule



*** Provisional Admittance:**
Typically, 4 weeks or per CDC catch up immunization schedule guidance.
May not exceed 6 months.

For more information:
<http://www.healthvermont.gov/immunizations-infectious-disease/immunization/child-care-providers>
For questions:
AHS.VDHIimmunizationProgram@vermont.gov