

Report Timeframe: May 14 to May 20, 2023

Statewide hospitalization levels: Low. New COVID-19 admissions are below 10 per 100,000 Vermonters per day.

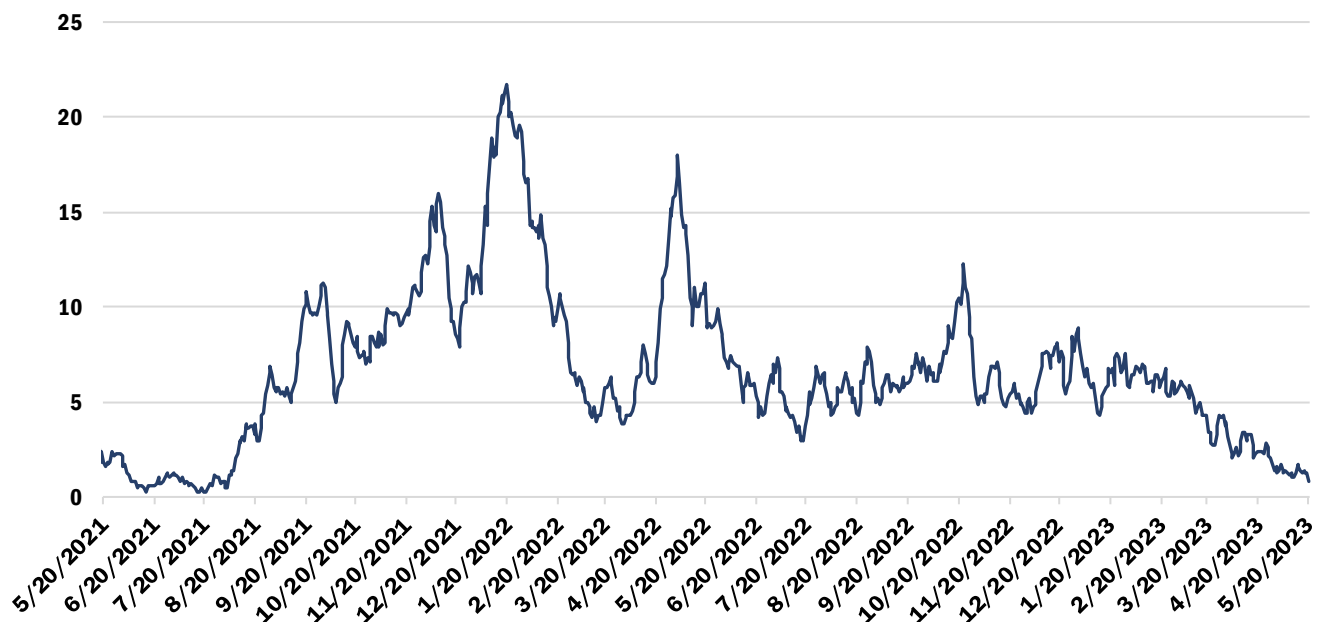
- New hospital admissions of patients with COVID-19, last 7 days: 0.96 per 100K
 - 6 total new admissions with COVID-19 (increase of two from last week)

The number of reportable COVID-19 cases is still available in this report, below. Laboratory-confirmed and diagnosed COVID-19 cases and COVID-19 outbreaks must still be reported to the Vermont Department of Health

Vermont Department of Health recommendations: [Preventing COVID-19 \(healthvermont.gov\)](https://healthvermont.gov)

Hospitalizations Over Time

Daily Hospitalizations With COVID-19 Diagnosis Seven-Day Rolling Average



Source: U.S. Department of Health and Human Services HHS Protect

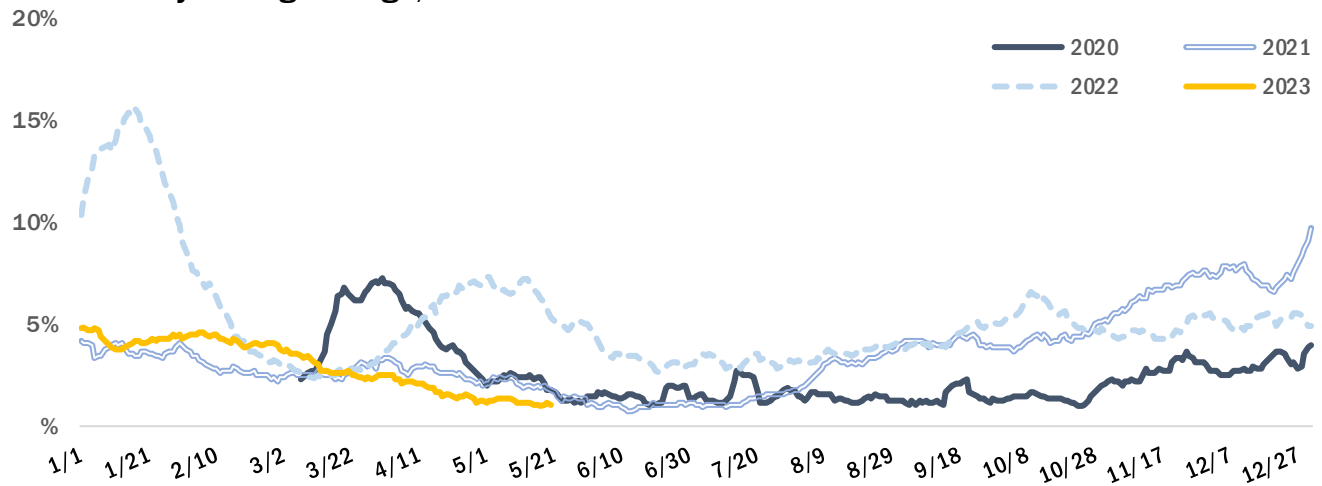
The seven-day rolling average of hospital patients admitted with a laboratory-confirmed COVID-19 was just under one during the most recent seven-day period, the lowest sustained average since the summer of 2021. The number is the daily average of the previous seven days; for example, the value for May 28 is the daily average for the days of May 21 through May 27.

Syndromic Surveillance

Vermont is using the Electronic Surveillance System for the Early Notification of Community-based Epidemics (ESSENCE), which provides all individual emergency department visits from participating emergency departments¹, to identify Emergency Department visits for COVID-Like Illness (CLI).

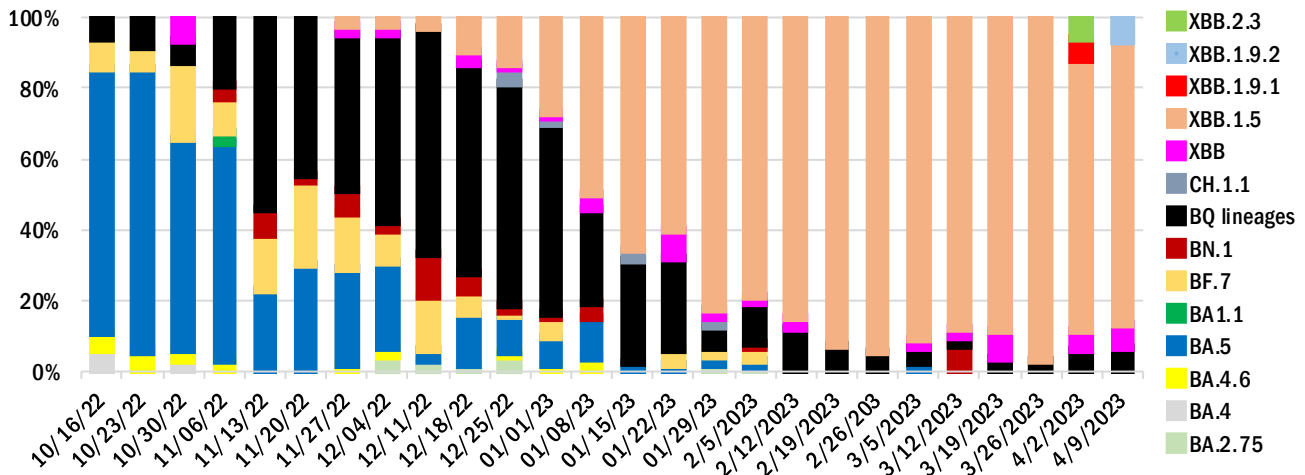
During this reporting period the proportion of emergency visits in participating emergency departments that included CLI was under 2%, lower than the same dates in previous years.

Percent of Emergency Visits with COVID-Like Illness Seven-Day Rolling Average, over Calendar Year



Source: Electronic Surveillance System for the Early Notification of Community-based Epidemics (ESSENCE)

Proportion of sequenced variants



XBB.1.5 and XBB continue to comprise >90% of circulating virus. (Sources: Broad; Aegis; Helix; LabCorp; Quest; Health Department Whole Genome Sequencing program)

¹ All Vermont hospitals and two urgent care clinics are included in ESSENCE.

Wastewater Monitoring



Vermont wastewater districts participating with the National Wastewater Surveillance System (NWSS).

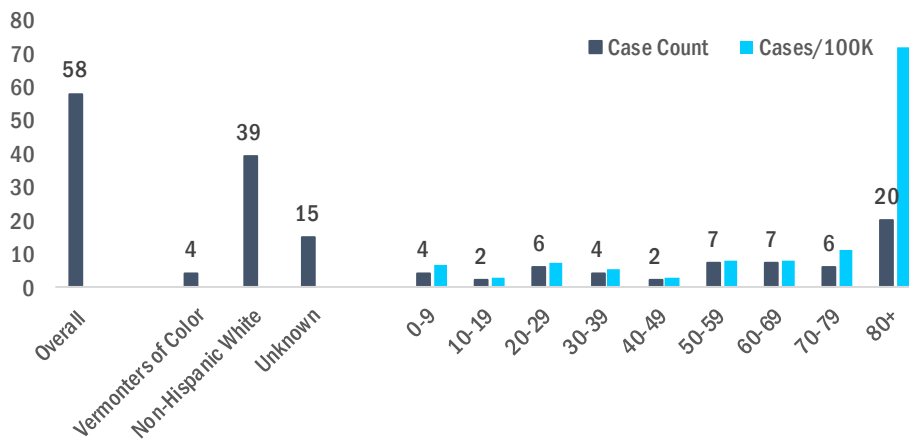
There are more decreases than increases this week.

Burlington’s main plant has been added.

| NWSS Site | 15-day % change |
|-------------------------|----------------------------|
| Bennington | Increase between 100%-999% |
| Brighton | * |
| Burlington (main plant) | Increase between 10%-99% |
| Essex Junction | Decrease between 10%-99% |
| Ludlow | Increase 1000% or more |
| South Burlington | Decrease between 10%-99% |
| St. Albans City | Decrease between 10%-99% |
| St. Johnsbury | Decrease between 10%-99% |
| Troy / Jay WWTP | Decrease between 10%-99% |
| Winooski | Decrease between 10%-99% |

Identified Cases

Vermont Weekly Case Counts/Rates



Note: Case counts and rates are calculated by *confirmed* and *probable* cases reported to the Health Department.

To calculate rates, counts are divided by 2019 Vermont population estimates for respective category and expressed per 100,000 in each category.

Due to a high number of cases missing race/ethnicity data, rates are not provided for race/ethnicity categories.

COVID-19 Outbreaks Reported May 16 to May 22

For purposes of this report, an outbreak is defined as three or more epidemiologically linked cases of COVID-19, where at least one such case has been laboratory or otherwise clinically confirmed as COVID-19.

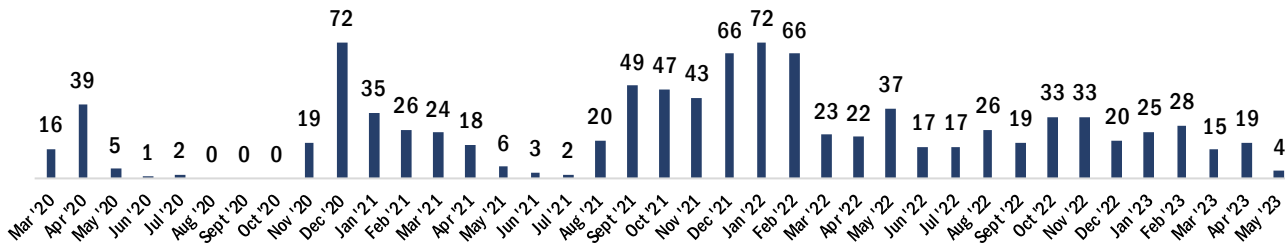
| Facility type | New Outbreaks Reported 5/16 – 5/22 |
|-----------------------|------------------------------------|
| Long-term Care (LTC) | 1 |
| Non-LTC Healthcare | - |
| Correctional Facility | - |
| School/childcare | - |
| Other | - |

| County | New Outbreaks Reported 5/16 – 5/22 |
|------------|------------------------------------|
| Addison | - |
| Bennington | - |
| Caledonia | - |
| Chittenden | - |
| Essex | - |
| Franklin | - |
| Grand Isle | - |
| Lamoille | - |
| Orange | - |
| Orleans | - |
| Rutland | - |
| Washington | 1 |
| Windham | - |
| Windsor | - |

Cumulative COVID-19 Deaths as of May 20, 2023

| Total | Age group | | | | | | | | |
|-------|-----------|-------|-------|-------|-------|-------|-------|-------|-----|
| | Under 10 | 10-19 | 20-29 | 30-39 | 40-49 | 50-59 | 60-69 | 70-79 | 80+ |
| 969 | 1 | 0 | 2 | 11 | 19 | 66 | 100 | 224 | 546 |

Monthly COVID-19 Deaths



Note: Deaths are from registered death certificates and represent preliminary data. A change in death count may represent new deaths, corrections, or other updates.

Data Source: Vermont Department of Health Vital Statistics System.

For more information about this report, please contact john.davy@vermont.gov